



Remote Video Speaker Microphone

Hytera's Remote Video Speaker Microphone (RVM) is designed to capture, store and share video, audio and image evidence in the field. The device integrates a body worn camera with a remote speaker microphone. Pairing with the Hytera Multi-mode Advanced Radio, the RVM allows you to make and receive voice communications, initiate an emergency alarm and deliver real-time video to a control center over the LTE network, even in low light conditions.

The Hytera RVM docks in to a specially designed Multi-unit Charger to auto export audio, video, images and log files to the Digital Evidence Management (DEM) platform. This ensures captured content remains tamper-proof, transferred securely to control center.



Camera

Outstanding Recording Performance

- 180° Rotatable & 140° Wide-angle Lens
- 16-megapixel Image Sensor
- 1080P @ 60FPS
- Six Infrared LED



Keys

Ergonomic Design for Easy Operation

- PTT
- Playback
- Emergency Call Button
- Channel Change
- One-touch Operation for Capture Video/Voice Recording

Structure Design

Professional for Mission Critical Scenario

- MIL-STD-810 G/IP67
- Speaker (2 Watt)
- Light Weight

Battery

- 2500 mAh Removable
- ≥8 hrs (Working)
- ≥250 hrs (Standby)



Connection

- Wired/BT 4.0/ Wi-Fi
- Real-time Video Send Back Solution

RVM Data Transfer and Collection Solution

Data/Video Real-time Transfer



Data/Video Storage & Collection



RVM Multi-unit Charger

- Charge six RVMs and six batteries simultaneously
- Provide power indication, battery charging status, and data transmission indication
- Auto export audio, videos, photos and log files ※
- Reprogram and upgrade the RVM ※

Note

※ indicates that the function needs to be coupled with MDM via USB cable.

Specifications:

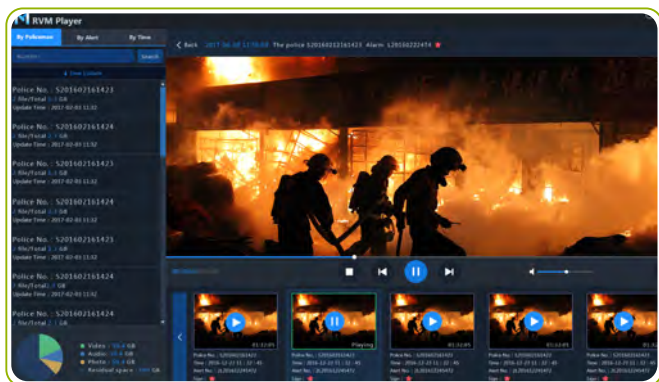
Input: 12 V/7 A

Output: 2*6*5 V/1 A

Interface: USB



Smart Mobile Device Management



Running on a PC, Smart MDM collects and stores digital evidence from the RVMs via Multi-unit Charger. With intuitive Graphic User Interface (GUI), you can review, manage, and share data simply and efficiently.

Highlights:

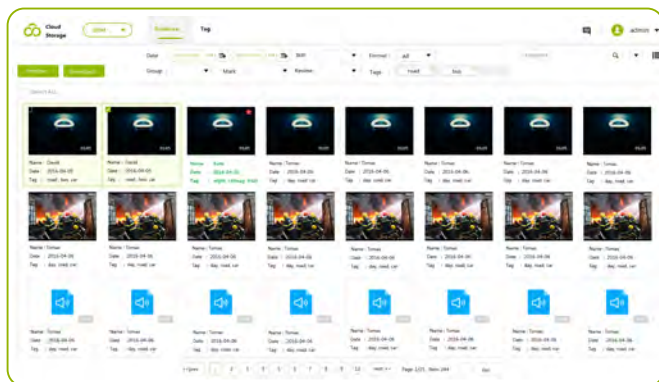
RVM Management

- Comprehensively manage the RVM devices
- Programming and upgrading the software/firmware

Data Processing

- Query and replay the local data
- Import and upload the data to the DEM automatically
- Clear the collected data automatically

Digital Evidence Management



Digital Evidence Management Platform collects and stores the digital evidence on a secure network. You can tag an evidence and find it easily through a key word search. For data security, you can assign customized permissions to different users.

Highlights:

Centralised Data Management

- Cloud server for centralised storage with RVM automatic data upload
- System log for evidence retrieval. Classify file evidences, and correlate them with case, Global Navigation Satellite System (GNSS) location information
- Capable of gathering and organising a large amount of data
- Rich interface to be compatible with other systems

Redundancy and Security

- Redundancy backup, load balancing mechanism for reliability
- User authorisation for security

Specifications

Size & Weight	Dimensions (H x W x D)	106.5mm x 60mm x 24mm
	Weight	<170g (including battery)
Camera	Image Sensor	16-megapixel
	Lens	Fixed Focus, all glass, 180° rotatable, diagonal 140°, horizontal 106°, vertical 78°
	Focus Range	0.1 m - infinity
Battery	Battery life (continuous video shooting)	≥8 hours
	Battery Capacity	2500 mAh
	Charging Time	≤4 hours
Display	Dimensions	2.4-inch
	Resolution	240(RGB) * 320 Dot
	Type	TFT-LCD 262K color display
Recording	Internal Memory	16 GB (standard configuration); 32 GB/64 GB/128 GB (optional)
	Video Format	mp4
	Video Encoding Technology	H.264
	Video Resolutions	VGA, 720P, 1080P
	Video Frames Per Second	30FPS and 60FPS
	Audio Format	AAC (Advanced audio coding)
	Image Format	JPG
	Image Resolution	4608*1296 (16-megapixel), 3072*1728 (5-megapixel), 2304*1296 (3-megapixel)
Audio	Pre-recording/Post-recording	20s/30s
	Speaker Power	2 Watt
Connectivity	Microphone	Silicon microphone x 1, -38 dB; electret microphone x 1, -42 dB
	Wi-Fi	802.11 b/g/n Access point and station support
	BT	BT4.0 Audio and BLE support
Auxiliary	Connector	Mirco USB port, 10-pin contact port
	IR Lamp	OSRAM x 6
	Night Vision Range (without lighting)	≥3 m
Durability	White LED	1 Watt x 1
	Ingress Protection	MIL-STD-810G, IP67
	Drop Resistance	1.5 m
	ESD	Contact discharge: 6 kV; air discharge: 12 kV
	Operating Temperature	-20°C to +60°C
Compatibility	Storage Temperature	-40°C to +85°C
	System Compatibility	WIN XP/7/8/10
	Radio Compatibility	Hytera Radios
Accessories	Standard	USB cable, charger, clip (rotatable, length-adjustable)
	Optional	Shoulder epaulette, radio connection cable, multi-unit charger, Wireless Remote controller

All specifications are subject to change without notice due to continuous development.

Accessories



RVM to PDC/PTC series Cable
RVM to PD7/9 series Cable
RVM to X1/Z1 series Cable



Clip



Wireless Ring PTT



Charger



Battery

Distributore Autorizzato per l'Italia:

ADVANTEC

Advantec Srl
Via Caduti per la Libertà, 13
10060 Pinasca TO - Italy
Tel. +39 0121326770
info@advantec.it - www.advantec.it

Hytera
Respond & Achieve

Hytera Mobilfunk GmbH

Address: Fritz-Hahne-Strasse 7, 31848 Bad Münster, Germany
Tel.: +49 (0)5042 / 998-0 **Fax:** +49 (0)5042 / 998-105
E-mail: info@hytera.de | www.hytera-mobilfunk.com



SGS certificate DE11/81829313

Hytera Mobilfunk GmbH reserves the right to modify the product design and the specifications. In case of a printing error, Hytera Mobilfunk GmbH does not accept any liability. All specifications subject to change without notice.

Encryption features are optional and have to be configured separately; they also are subject to German and European export regulations.

HYT Hytera are registered trademarks of Hytera Co. Ltd.
ACCESSNET® and all derivatives are protected trademarks of Hytera Mobilfunk GmbH. © 2014 Hytera Mobilfunk GmbH. All rights reserved.